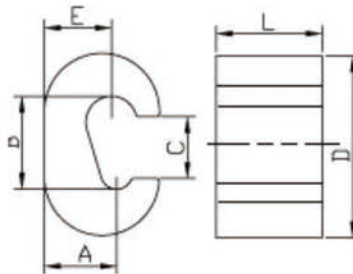


C SHAPE COPPER WIRE CLAMPS C型夹

| PART NO 2015-2018 | ITEM NO | DIMENSIONS | | | | |
|----------------------|---------|------------|------|------|------|------|
| | | B | D | E | C | L |
| LY0018-0001 | CRC-4 | 12.0 | 19.5 | 3.9 | 7.3 | 17.6 |
| LY0018-0002 | CRC-5 | 14.1 | 20.6 | 4.2 | 9.1 | 17.7 |
| LY0018-0003 | CRC-7 | 18.2 | 26.7 | 5.1 | 11.9 | 21.3 |
| LY0018-0004 | CRC-9 | 21.5 | 34.2 | 6.2 | 11.2 | 27.2 |
| LY0018-0005 | CRC-11 | 24.8 | 41.0 | 14.3 | 14 | 29.4 |
| LY0018-0006 | CRC-12 | 27.5 | 39.9 | 8.0 | 14.3 | 29.1 |
| LY0018-0007 | CRC-13 | 30.0 | 44.3 | 8.5 | 16.2 | 30.3 |
| LY0018-0008 | CRC-15 | 36.3 | 45.2 | 5.8 | 17.2 | 30.2 |
| LY0018-0009 | CRC-16 | 36.6 | 53.8 | 9.5 | 17.7 | 35.2 |

LONGYI TERMINALS



C SHAPE COPPER WIRE CLAMPS C型夹

| PART NO 2015-2018 | ITEM NO | DIMENSIONS | | | | | |
|----------------------|---------|------------|------|------|------|------|------|
| | | B | D | E | A | C | L |
| LY0018-0010 | CRC-3 | 10.5 | 18.7 | 6.9 | 6.3 | 7.7 | 17.5 |
| LY0018-0011 | CRC-6 | 15.4 | 25.2 | 9.3 | 9.6 | 9.3 | 21.2 |
| LY0018-0012 | CRC-8 | 18.4 | 33.3 | 11.3 | 11.9 | 11.9 | 27.2 |
| LY0018-0013 | CRC-10 | 22.3 | 42.0 | 13.1 | 13.2 | 14.8 | 29.2 |
| LY0018-0014 | CRC-14 | 31.5 | 44.5 | 15.2 | 15 | 18.6 | 27.5 |