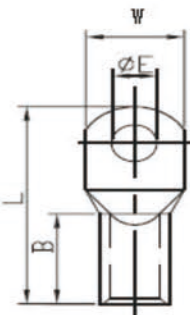
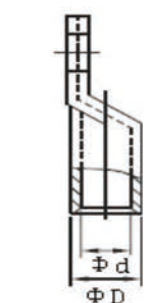


GPH COPPER TUBE



PART NO 2015-2018	ITEM NO	DIMENSIONS					
		φ E	Φ D	Φ d	W	B	L
LY0011-0001	GPH1.5-3	3.2	3.3	1.8	6.5	6.0	15.5
LY0011-0002	GPH1.5-4	4.3	3.3	1.8	6.5	6.0	17.5
LY0011-0003	GPH1.5-5	5.3	3.3	1.8	9	6	19.0
LY0011-0004	GPH1.5-6	6.4	3.3	1.8	9	6	22.5
LY0011-0005	GPH2.5-4	4.3	4.2	2.2	7.5	6	17.1
LY0011-0006	GPH2.5-5	5.3	4.2	2.2	8.5	6	19.2
LY0011-0007	GPH2.5-6	6.4	4.2	2.2	9.5	6	22.8
LY0011-0008	GPH2.5-8	8.4	4.2	2.2	13	6	28.0
LY0011-0009	GPH4-4	4.3	5	3	8.5	8	21.8
LY0011-0010	GPH4-5	5.3	5	3	9	8	22.2
LY0011-0011	GPH4-6	6.4	5	3	10	8	22.2
LY0011-0012	GPH6-5	5.3	6.5	3.5	10	11	28.2
LY0011-0013	GPH6-6	6.4	6.5	3.5	12	11	29.1
LY0011-0014	GPH6-8	8.4	6.5	3.5	15	11	31.8
LY0011-0015	GPH6-10	10.5	6.5	3.5	17	11	37.0
LY0011-0016	GPH10-5	5.3	7.0	4.5	12.0	11.0	28.1
LY0011-0017	GPH10-6	6.4	7.0	4.5	12.0	11.0	29.0
LY0011-0018	GPH10-8	8.4	7.0	4.5	14.5	10.0	33.3
LY0011-0019	GPH10-10	10.5	7.0	4.5	16.0	11.0	36.9
LY0011-0021	GPH16-5	5.3	8.5	5.5	12.0	14.0	33.1
LY0011-0022	GPH16-6	6.4	8.5	5.5	12.5	14.0	33.5
LY0011-0023	GPH16-8	8.4	8.5	5.5	13.8	14.0	38.0
LY0011-0024	GPH16-10	10.5	8.5	5.5	17.0	14.0	42.0
LY0011-0025	GPH16-12	13.2	8.5	5.5	20.0	14.0	44.5
LY0011-0026	GPH25-6	6.4	10.0	7.0	14.0	15.0	34.6
LY0011-0027	GPH25-8	8.4	10.0	7.0	16.0	15.0	39.0
LY0011-0028	GPH25-10	10.5	10.0	7.0	18.0	15.0	44.5
LY0011-0028	GPH25-12	13.2	10.0	7.0	20.0	15.0	47.0
LY0011-0029	GPH35-6	6.4	12.0	8.5	16.7	16.0	38.0
LY0011-0030	GPH35-8	8.4	12.0	8.5	17.5	17.0	43.0
LY0011-0031	GPH35-10	10.5	12.0	8.5	18.5	16.0	46.0
LY0011-0032	GPH35-12	13.2	12.0	8.5	21.3	16.0	50.0
LY0011-0033	GPH50-8	8.4	14.0	10.0	21.0	19.0	47.0
LY0011-0034	GPH50-10	10.5	14.0	10.0	21.0	19.0	51.2
LY0011-0035	GPH50-12	13.2	14.0	10.0	21.5	19.0	52.0
LY0011-0036	GPH70-8	8.4	16.5	12.0	23.2	21.0	52.0
LY0011-0037	GPH70-10	10.5	16.5	12.0	23.2	21.0	52.0
LY0011-0038	GPH70-12	13.2	16.5	12.0	23.2	21.0	55.7
LY0011-0039	GPH95-8	8.4	18.0	13.5	25.6	25.0	59.0
LY0011-0040	GPH95-10	10.5	18.0	13.5	25.6	25.0	59.0
LY0011-0041	GPH95-12	13.2	18.0	13.5	25.6	25.0	61.0
LY0011-0042	GPH120-10	10.5	19.5	15.0	28.2	27.0	68.0
LY0011-0043	GPH120-12	13.2	19.5	15.0	28.2	27.0	68.0
LY0011-0044	GPH120-16	17.0	19.5	15.0	30.0	27.0	74.0
LY0011-0045	GPH150-10	10.5	21.2	16.5	30.6	30.0	71.0
LY0011-0046	GPH150-12	13.2	21.2	16.5	30.6	30.0	71.0
LY0011-0047	GPH150-16	17.0	21.2	16.5	30.6	30.0	77.0
LY0011-0048	GPH185-10	10.5	24.2	19.0	35.1	32.0	79.0
LY0011-0049	GPH185-12	13.2	24.2	19.0	35.1	32.0	79.0
LY0011-0050	GPH185-16	17.0	24.2	19.0	35.1	32.0	83.0
LY0011-0051	GPH240-12	13.2	26.2	21.0	37.7	36.0	89.0
LY0011-0052	GPH240-16	17.0	26.2	21.0	37.7	36.0	89.0
LY0011-0053	GPH240-20	21.0	26.2	21.0	37.7	36.0	95.0
LY0011-0054	GPH300-12	13.2	30.2	24.0	44.0	44.0	110.0
LY0011-0055	GPH300-16	17.0	30.2	24.0	44.0	44.0	110.0
LY0011-0056	GPH300-20	21.0	30.2	24.0	44.0	44.0	110.0
LY0011-0057	GPH400-16	17.0	33.7	27.5	49.0	50.0	119.0
LY0011-0058	GPH400-20	21.0	33.7	27.5	49.0	50.0	119.0